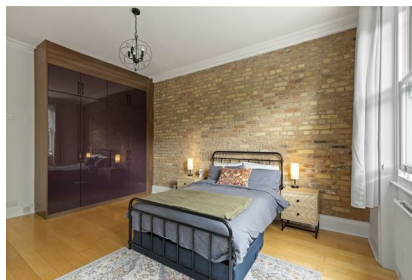


Parkheath

Sold on Service

Aberdare Gardens NW6

£3,500 PCM (£808 per week) - Camden Band F



Spacious 2 double bedroom apartment

Highly sought-after South Hampstead conservation area

High ceilings and wood flooring throughout

Four-piece bathroom with bathtub and separate shower cubicle

Close to a range of local amenities and excellent transport links

West Hampstead Office 020 7794 7111

Set on the first floor of an attractive period conversion

Reception/dining room with built-in library shelves and ample storage

Separate fitted kitchen including a dishwasher

Fitted wardrobes in both bedrooms

EPC: Rating C, Council Tax: Camden band F



Aberdare Gardens, London, NW6

Approximate Gross Internal Area 94.32 sqm / 1015 sqft



N



First Floor

THIS FLOOR PLAN IS PRODUCED FOR PARKHEATH SUBMITTED BY **ARCHIMEDIA** web: www.archi-media.co.uk

Whilst every attempt has been made to ensure the accuracy of the floor plan contained here, measurements of doors, windows and rooms are approximate and no responsibility is taken for any error, omission or misstatement. These plans are for representation purposes only and should be used as such by any prospective buyer or lease. Specifically no guarantee is given on the gross internal floor area of the property if quoted on this plan and any figures given is initial guidance only and should be treated as such.

The particulars do not constitute part of an offer or contract. The particulars, including text, photographs and plans, are for the guidance only of prospective purchasers/tenants and must not be relied upon as statements of fact. The descriptions provided therein represent the opinion of the author and whilst given in good faith should not be construed as statements of fact. Nothing in these particulars shall be deemed a statement that the property is in good condition or otherwise or that any services or facilities are in good working order. All measurements are approximate